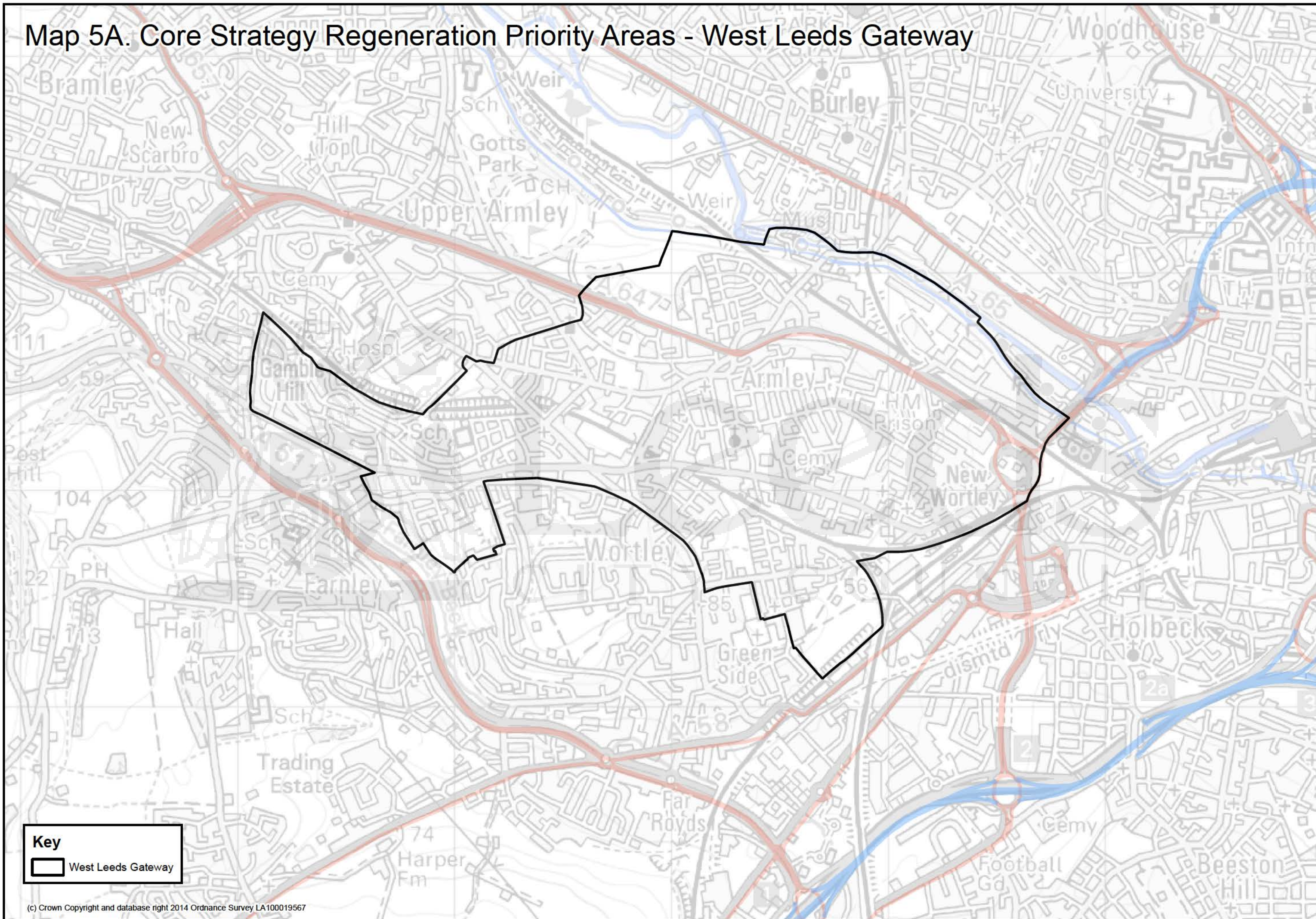
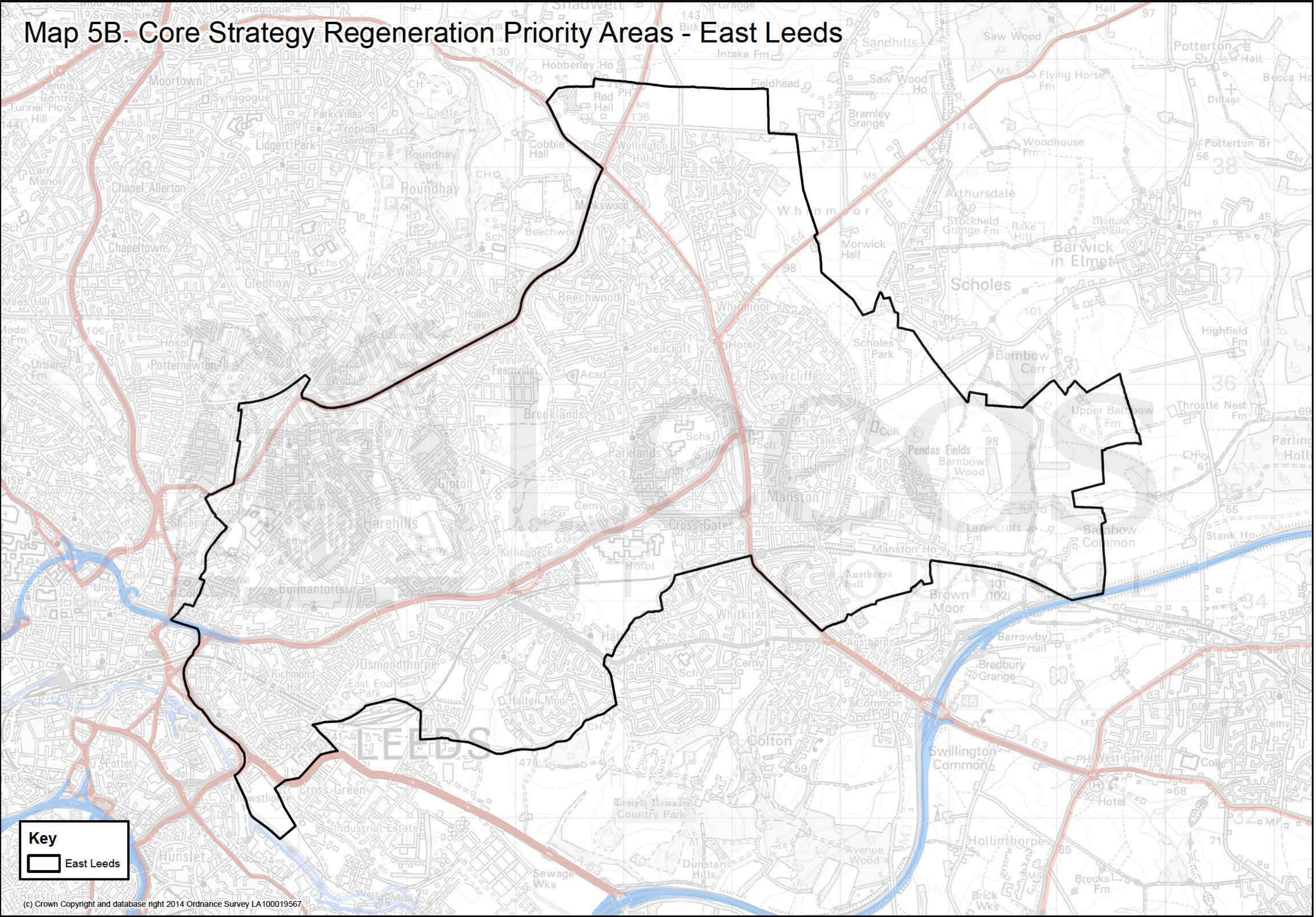


Map 5A. Core Strategy Regeneration Priority Areas - West Leeds Gateway





Map 5B. Core Strategy Regeneration Priority Areas - East Leeds

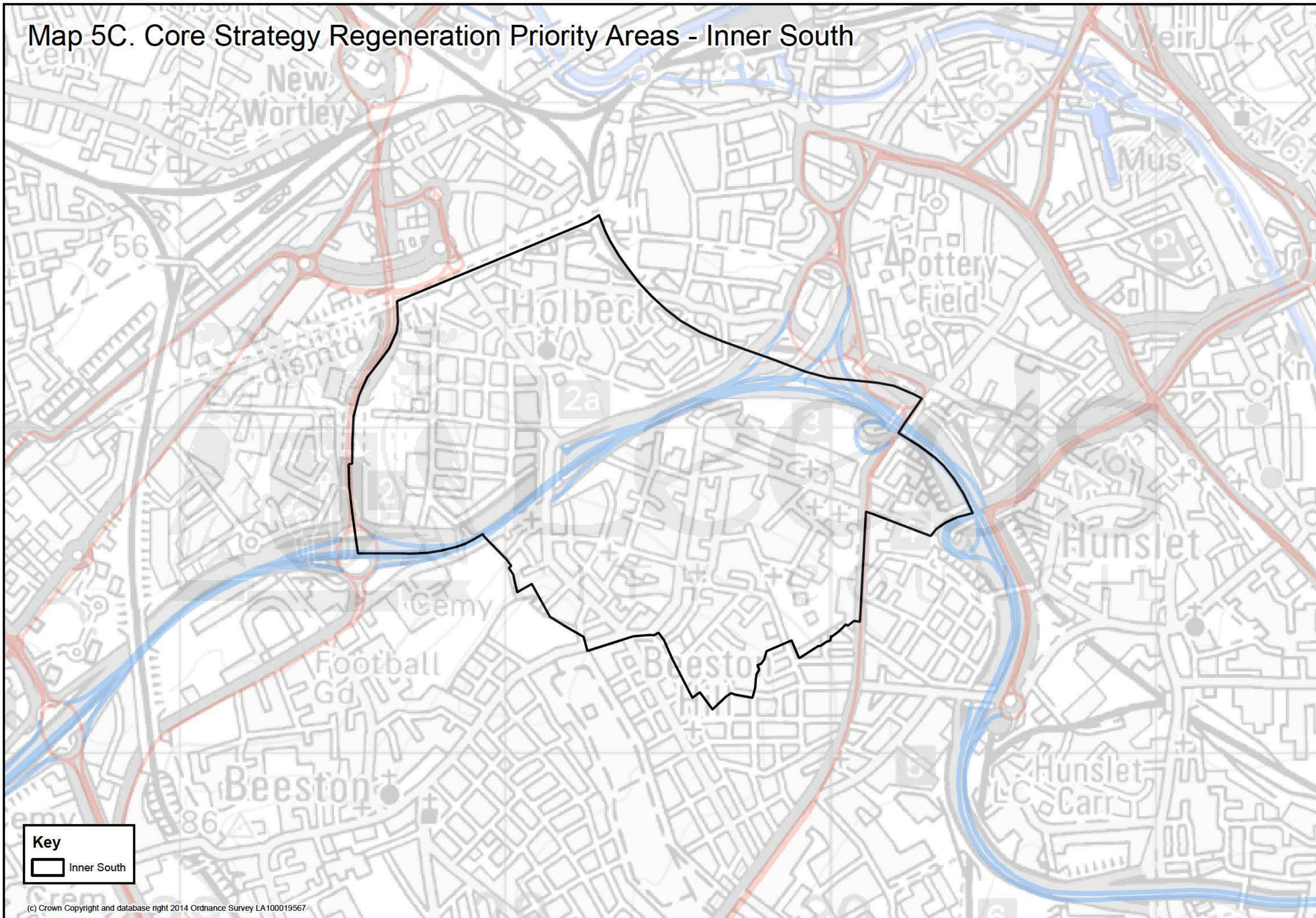


**Key**

East Leeds



Map 5C. Core Strategy Regeneration Priority Areas - Inner South

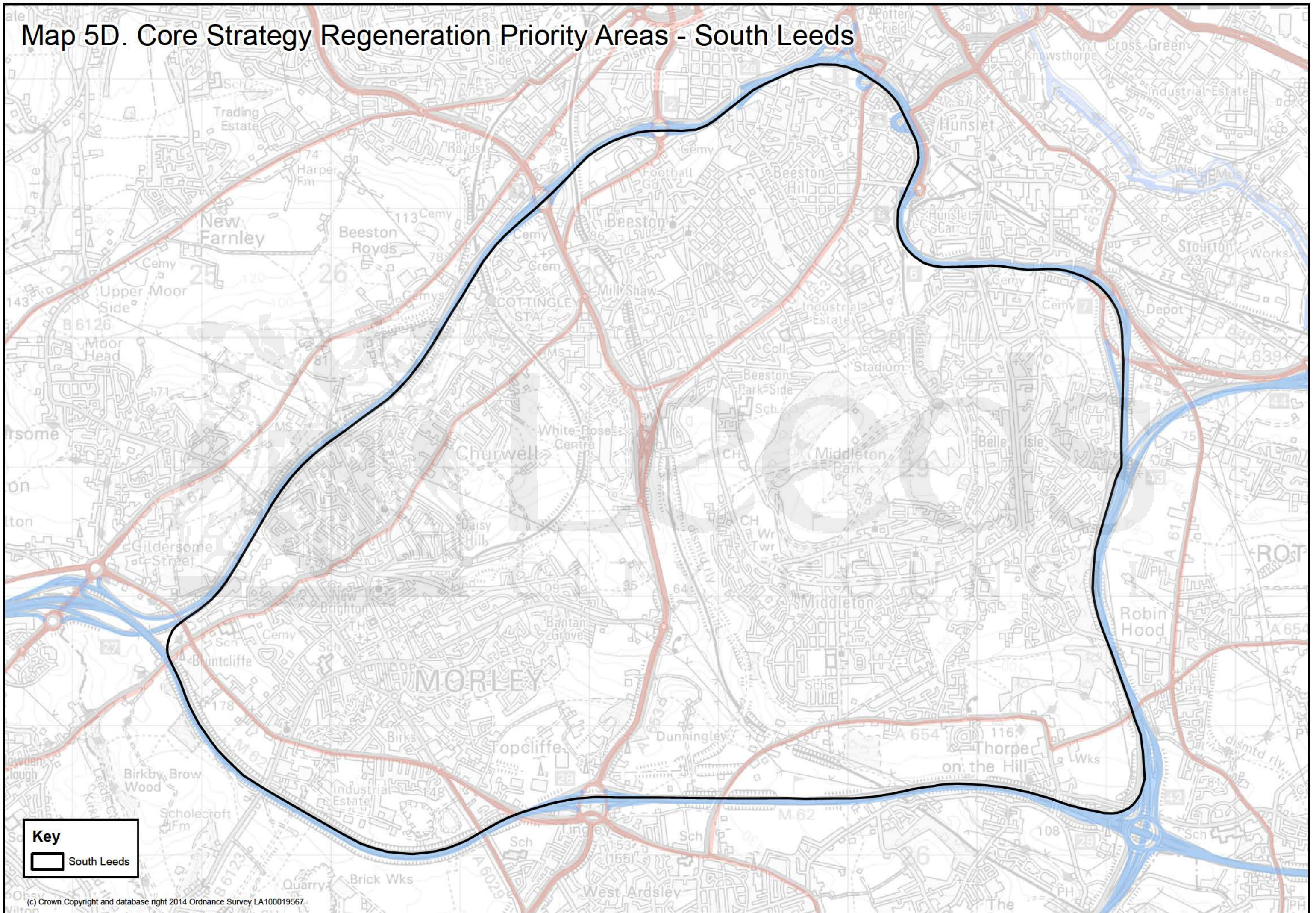


**Key**


Inner South



# Map 5D. Core Strategy Regeneration Priority Areas - South Leeds

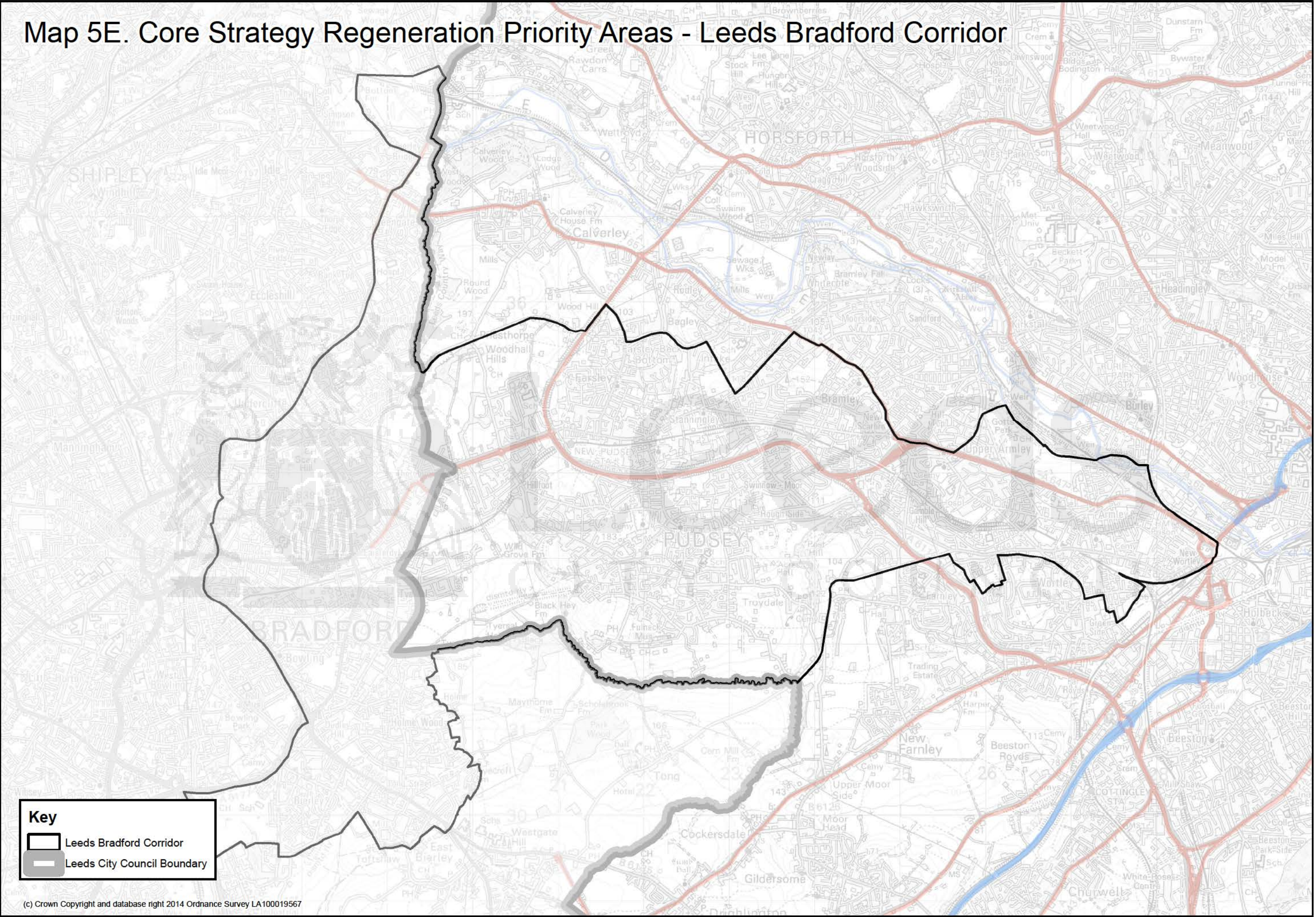


**Key**

 South Leeds

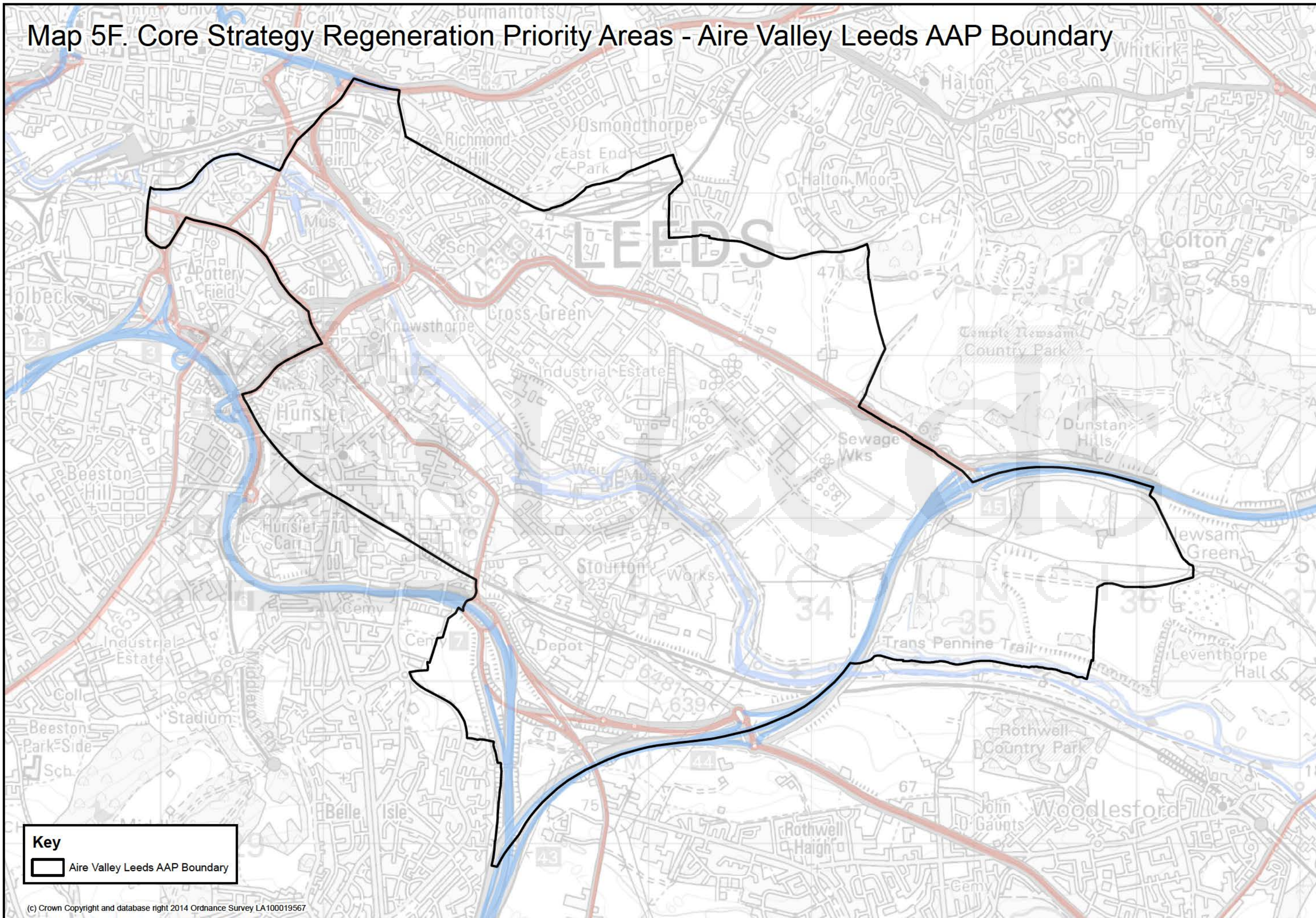


Map 5E. Core Strategy Regeneration Priority Areas - Leeds Bradford Corridor





Map 5F. Core Strategy Regeneration Priority Areas - Aire Valley Leeds AAP Boundary





Map 13. Locations Subject to Sequential Assessment

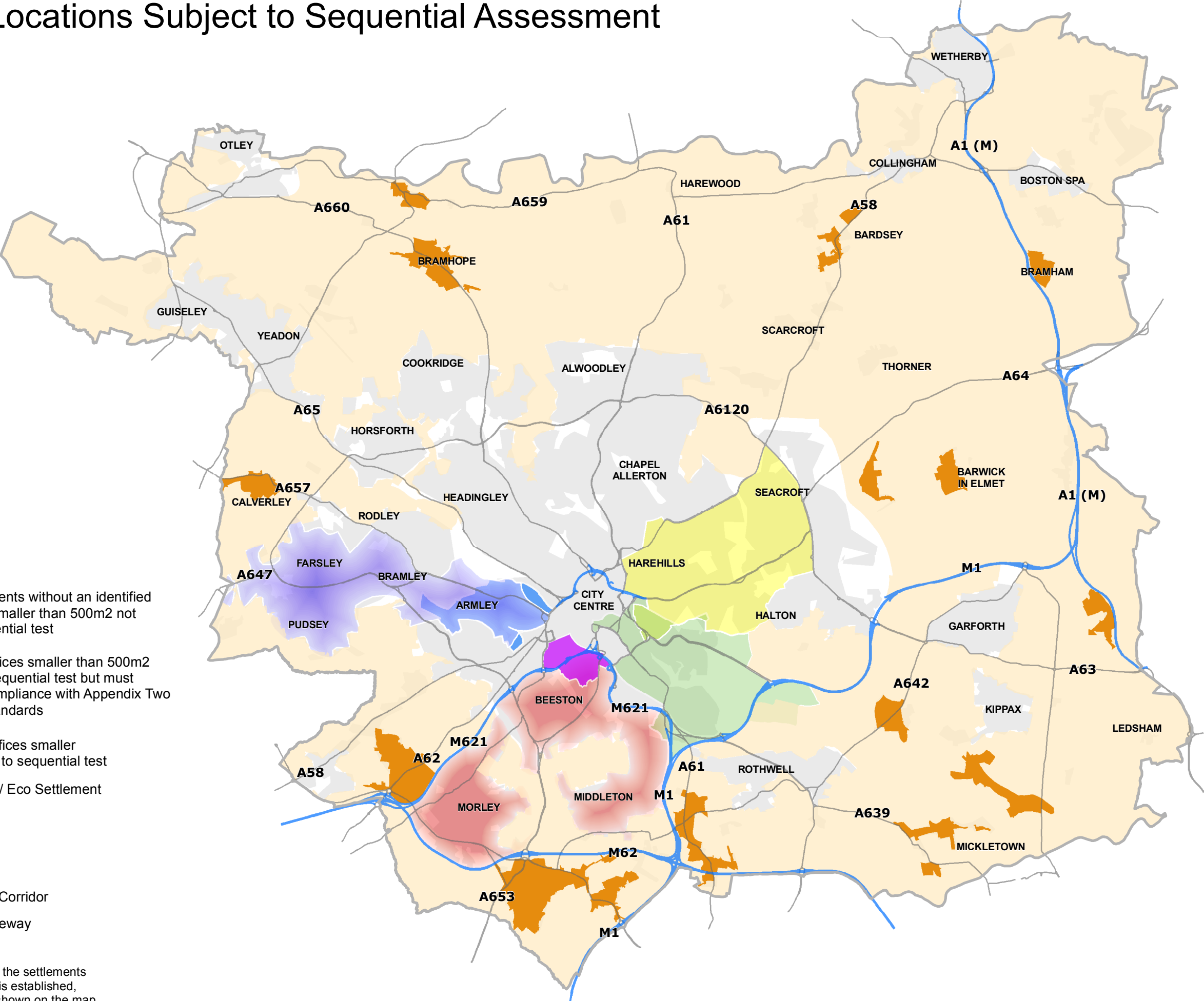
Key

- Smaller Settlements without an identified centre: offices smaller than 500m2 not subject to sequential test
- Rural Areas: Offices smaller than 500m2 not subject to sequential test but must demonstrate compliance with Appendix Two Accessibility Standards

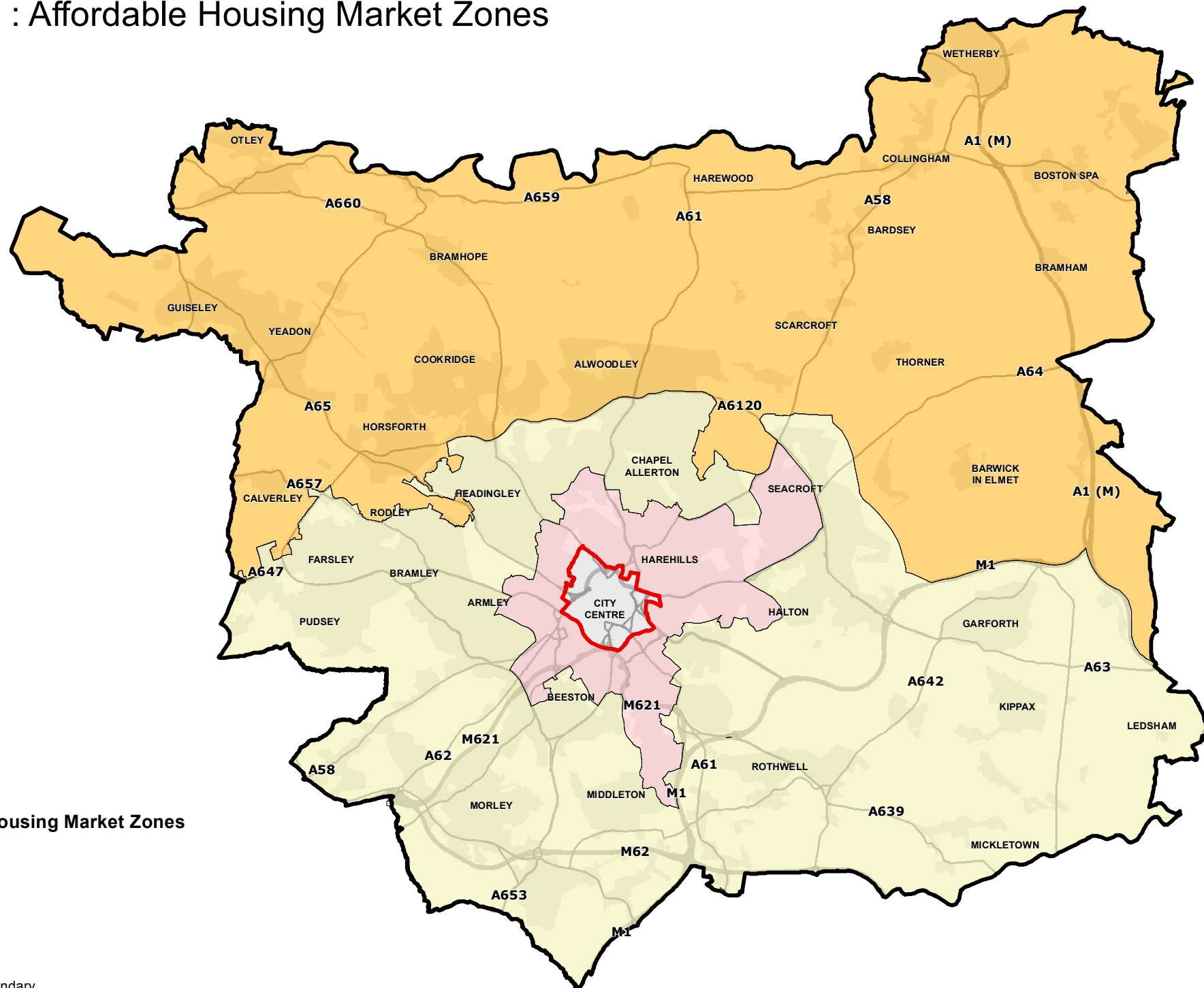
Regeneration Areas: Offices smaller than 500m2 not subject to sequential test

- Aire Valley AAP / Eco Settlement
- East Leeds
- Inner South
- South Leeds
- Leeds Bradford Corridor
- West Leeds Gateway

N.B. Where boundaries for the settlements change, or if a new centre is established, this will change the areas shown on the map.



# Map 12 : Affordable Housing Market Zones





Map 20. Locations with Greatest Potential for the Creation of Heat Networks

